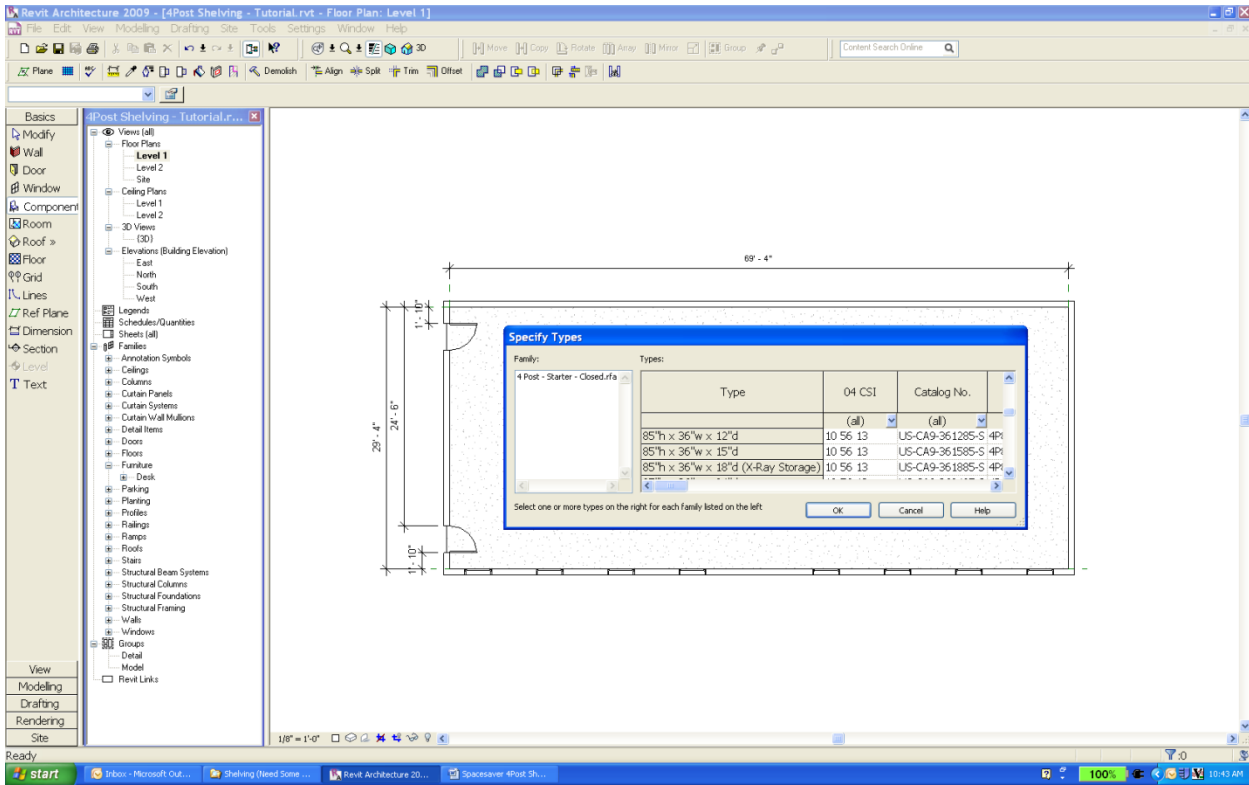


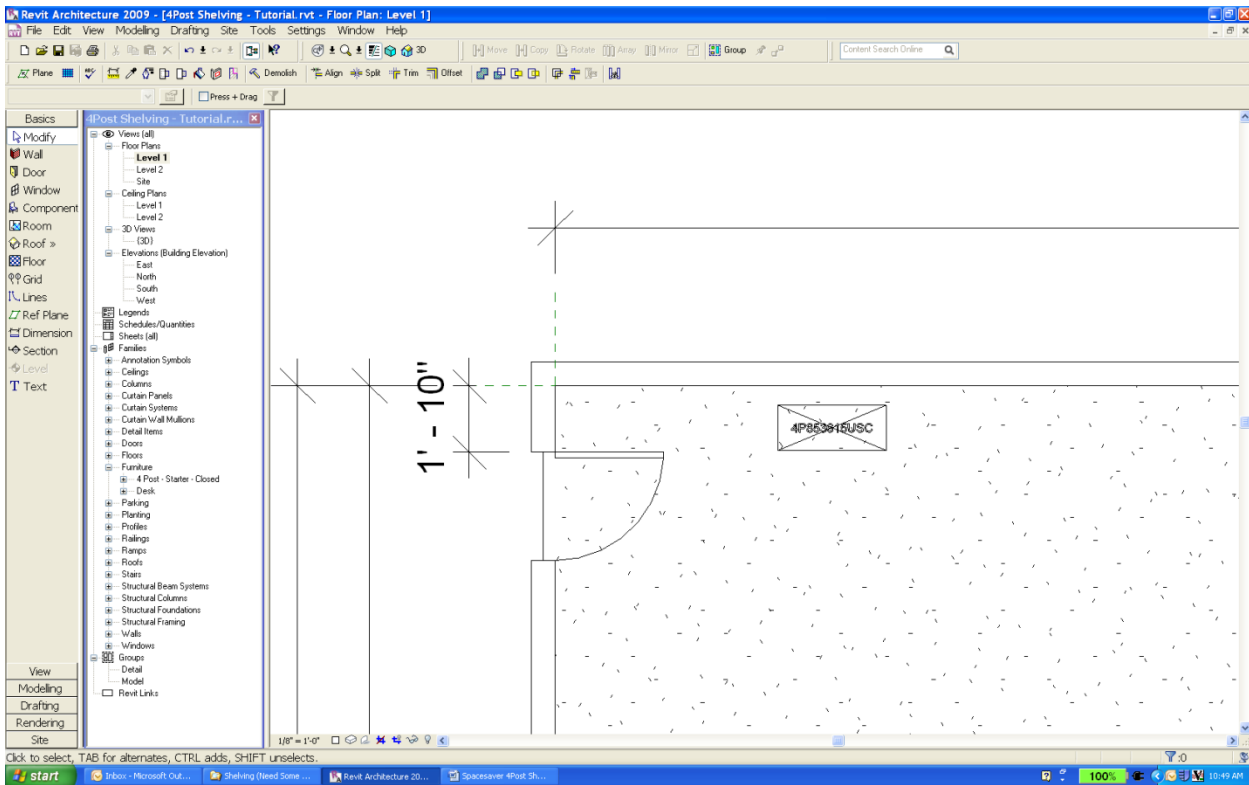
Spacesaver 4Post Shelving Family Usage Tutorial

This tutorial is provided to help the end user understand the behavior of this particular Revit family model and does not intend to limit its application. The application shown is simplified for illustration only.

1. Load the desired **Spacesaver 4Post Shelving (S4S)** family into your project file. **Type catalogs have been provided with all S4S families allowing the user to only load specific family types.** Shelving types have been labeled to show Height, Width, and Depth as well as Specific Application (X-Ray Storage) where it applies. S4S families are divided into Starters and Adders. These families cover 36”, 42”, & 48” wide, open and closed upright shelving configurations in 76-1/4”, 85-1/4”, & 88-1/4” heights. **Other configurations are available.** 4Post shelves are on 1-1/2” centers.

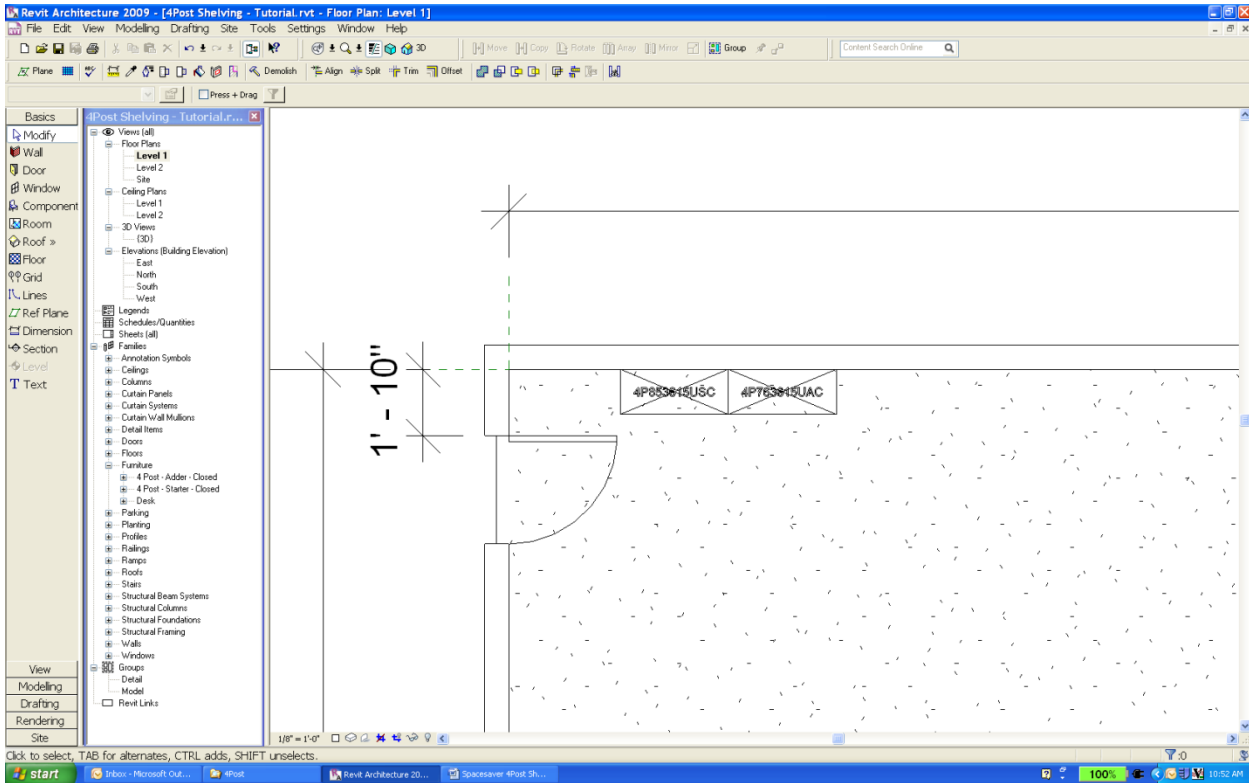


2. All S4S family models contain a label to assist in type identification. Labels denote unit’s shelving type (4P), Height (H), Width (W), and Depth (D) followed by U (Universal Shelves), an S (Starter) or A (Adder), and C (Closed Uprights) or O (Open Uprights). With the exception of canopies, shelves used on 4Post shelving are slotted universal shelves. **File dividers and front bases are not included in any of the catalog configurations depicted in these families.**

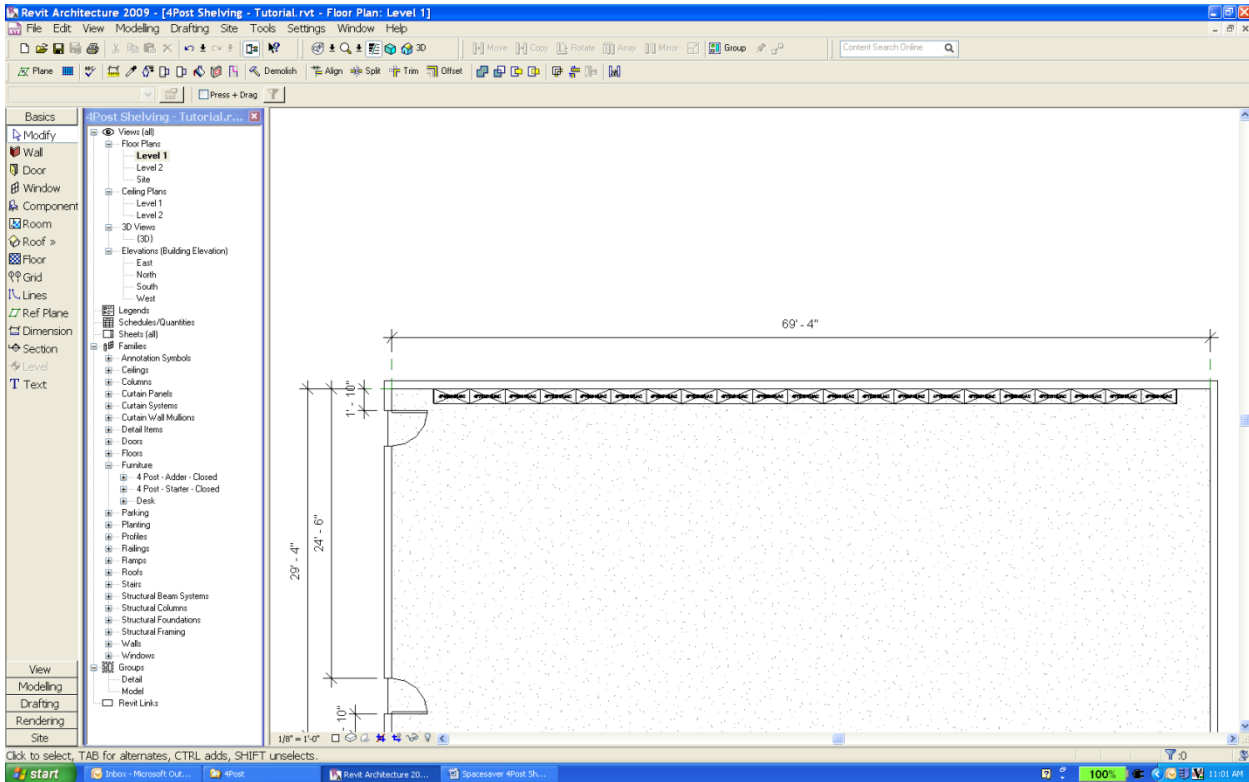


Spacesaver 4Post Shelving Family Usage Tutorial

3. Position the models. In most cases, shelving runs begin with a Starter and finish with Adders (unless your project specification calls for all Starters).

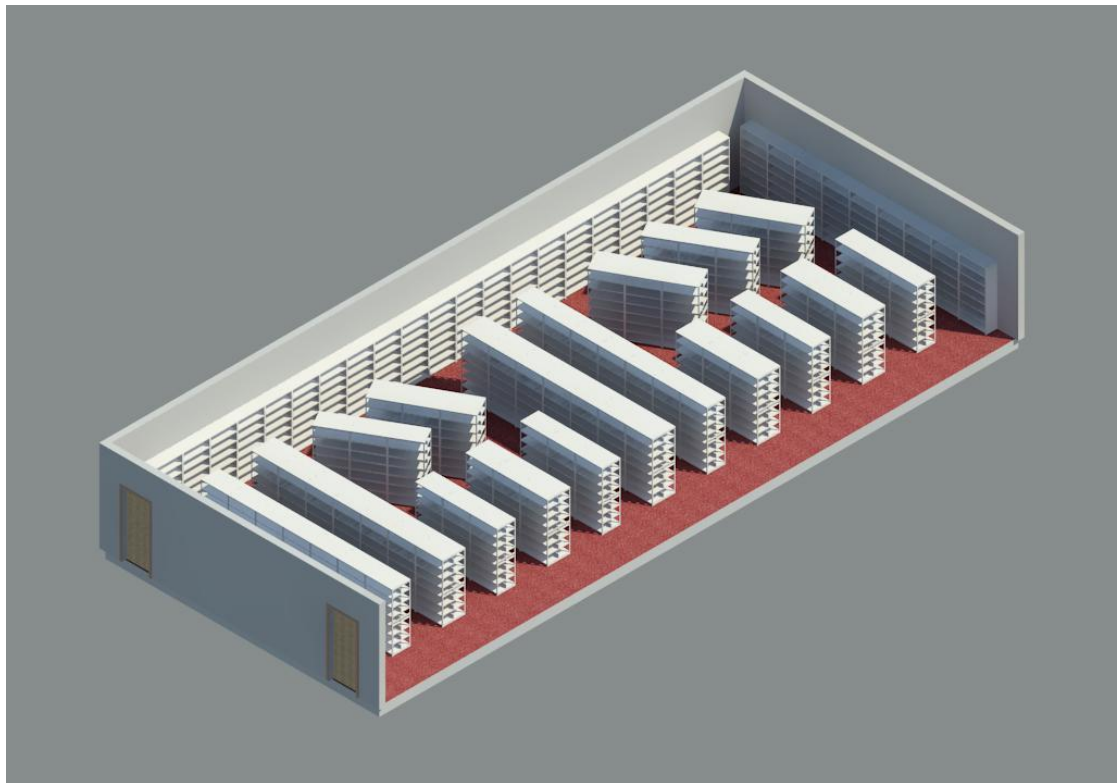
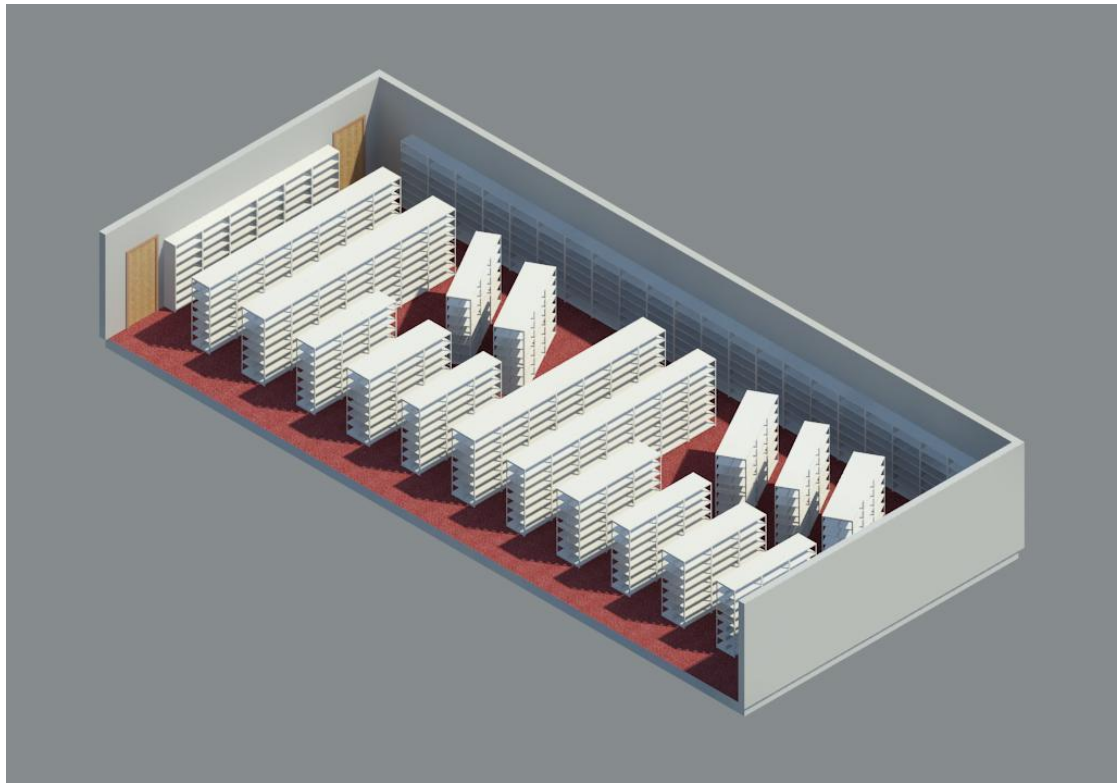


4. These S4S families have optional end panels. **End panels on Starters are both Left & Right, the end panel on Adders is only to the Right.** Once the shelving range length is established, the last unit in the array may be ungrouped and “RH Angle Upright From Starter” and “Optional RH End Panel” turned on in Element Properties and/or Type Properties.



Spacesaver 4Post Shelving Family Usage Tutorial

5. Continue with positioning and arraying until your storage capacity is fulfilled. Remember, to save time, arrays may also be arrayed, grouped and saved as favorites.



Please contact Spacesaver Corporation using the URLs imbedded within these model (highlight the model, right click and choose “**Element Properties**”, click “**Edit/New...**” and look for them in the “**Identity Data**” category within “**Type Properties**”). We will gladly put you in touch with a factory trained professional to help you with your storage need specifications, mobile system options, color options, shelving size information, and timely quotes.